

Micklefield Footpath Repair works

Work starts- 20/03/2024

**Balfour
Beatty**

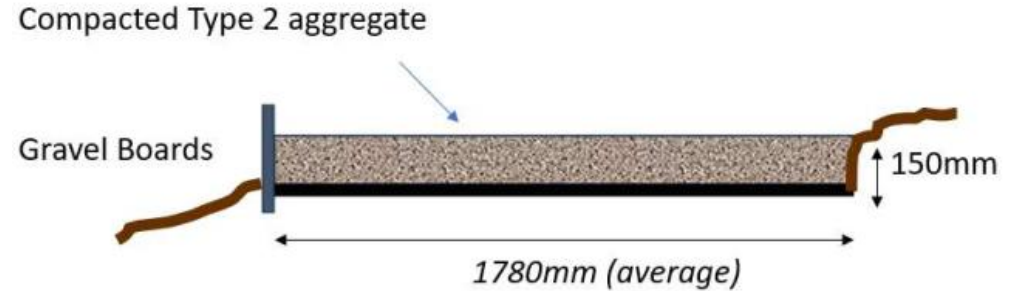
PHOTOS OF CURRENT CONDITION:



SITE PLAN



SCOPE OF WORK



- Works area is from the end of blacktop path heading south-east to the Area27 boundary approximately 5m south-east of the culvert indicated in the above plan (red line).
- Placing 150mm of Type 2 Material to the permissive route to the west of the A1M “Micklefield Footway”.
- Material is to be laid to an average of 1.78m width, gravel boards installed along the western side of the path to prevent material slippage / washout.
- Aggregate material required to be compacted to DMRB specification and level to current contours of existing footway. (DMRB- Design Manual for Roads and Bridges)
- Terram will be laid under the aggregate to prevent it seeping into the muddy sections.
- Path is average of 1.78m width.
- The material will be laid at 150mm depth.
- Distance: 380 metres (see red line on above plan).
- Works to be delivered in April.

RISKS INVOLVED

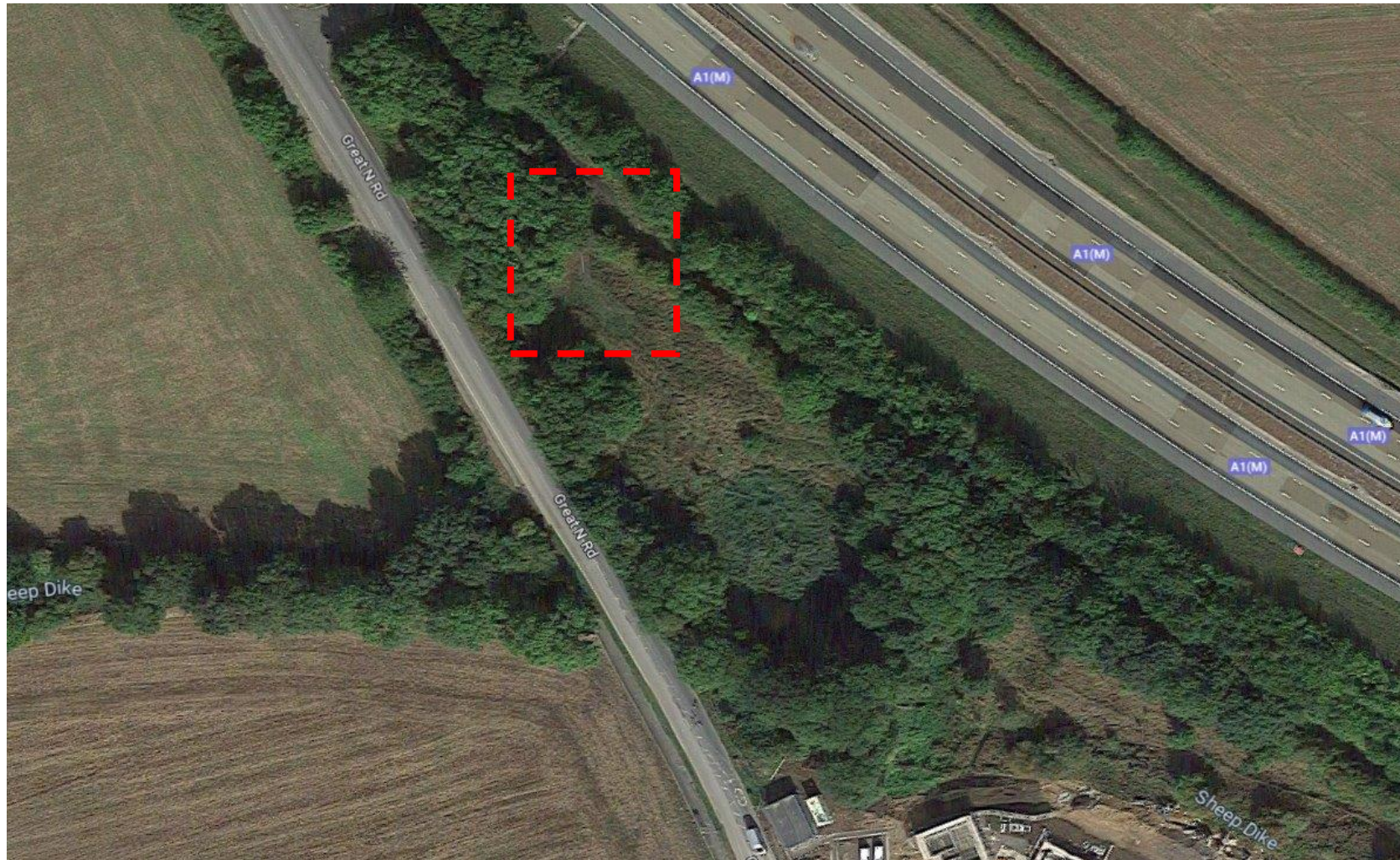
- Risk of Pedestrians/Dog walkers in the closed area
- Blocked Entrances by Parked Vehicles
- Slip/Skid and Falling Hazards
- Underground Utilities

RISK MITIGATION

- Diversion Sign & Posts with barricade on both sides.
- Placing 'No Parking – Access Required to site' at the starting point.
- Personnel Selection: Selecting and Inducting the right people for the job.
- Pre-Work Site Scan: Conducting thorough site scans before work.



Material Storage Area?



THANK YOU